

Program Year

For the 2023-2024 school year, the after school program is divided into two semesters:

Semester 1: September 11, 2023 to January 25, 2024
Semester 2: January 29, 2024 to June 13, 2024

For a complete list of dates Be Me is not running, please see the separate document, "Be Me 2023-2024 Important Dates."

Online Registration

All after school registrants are required to enroll through the parent portal, which is available here.

Initial Payment

A \$250 deposit is required to secure a child's spot. The \$250 will be applied towards your first installment payment.

Membership

While membership is not required for Be Me registrants, our Family Membership offers discounted pricing for Y programs, including Be Me, Y Nursery School, Nursery Elective Classes, Footpaths Nursery Camp, the Hudson Cliffs Baseball League, Camp Twelve Trails, adult arts & culture classes, and adult fitness classes. This membership also entitles one guardian to full access to the Y's Fitness Center. Registrants will have the option to sign up for a Family Membership during Be Me's online registration process.

Yearly membership costs are:

- One child in program: \$450
- Two children in Y programs: \$500
- + Add Fitness Membership for one additional guardian: \$50



Yearly Tuition

Days Per Week	Tuition
5 days	\$5,085
4 days	\$4,775
3 days	\$4,110
2 days	\$3,425

*Through our longstanding partnership with PS. 187, Muscota, Amistad, PS. 278, Dos Puentes, PS.178 and PS. 152, we are able to offer transportation to the Y.

Membership Discount

Days Per Week	Tuition
5 days	\$4,735
4 days	\$4,425
3 days	\$3,785
2 days	\$3,200

OPTIONAL

Yearly Transportation Home from the Y

End-of-day busing is not available for participants enrolled in Late Care. All participants must be picked up from the Y.

Days Per Week	Busing Home
4 days	\$800
3 days	\$725
2 days	\$650
1 day	\$575

Yearly Late Care

End-of-day busing is not available for participants enrolled in Late Care. All participants must be picked up from the Y.

Days Per Week	Late Care
4 days	\$800
3 days	\$725
2 days	\$650
1 day	\$575

* Busing Home and Late Care are **not** available on Fridays *

Installment Payments

The sum of your yearly tuition, plus yearly add-ons such as transportation and late care, will be divided by 10. This is the amount you will pay in 10 monthly installments, on the last Friday of every month, from August through May (with the exception of November which, due to Thanksgiving, we have moved to the week prior). If you sign up for Premium Activities, those additional fees will be divided by 5 and added to your monthly installments for the duration of the semester.

Payment Dates

8/25/23	1/26/24
9/29/23	2/23/24
10/27/23	3/29/24
11/17/23*	4/26/24
12/29/23	5/31/24

*This payment will be made the Friday prior to the last Friday of the month.

By enrolling in Be Me, registrants give the Y permission to charge the credit card or debit card provided at the time of registration for the appropriate fees, on the above dates. It is the responsibility of the registrant to familiarize themselves with the fees associated with Be Me's services prior to enrollment. All fees are available at the Be Me homepage, as well as the beginning of this document.

Late Payments

Registrants are advised to ensure that their credit or debit card on file remains updated, as to avoid late fees. When a parent or guardian fails to pay by the aforementioned deadlines, the Y will assess for late fees.

Schedule Changes

Changes to your after school schedule can be accommodated if notified appropriately, and with space permitting. Notifications of this nature should be sent by email to BeMe@ywhi.org at least 72 hours prior to the next billing cycle. All changes will require a \$100 administrative fee. There is no fee for changes between semesters.



Rate and Additional Fees

Premium Activities

The majority of after school activities are available to participants at no additional fee. However, certain specialized after school activities require an additional fee in order to participate. These Premium Activity fees are published on a per-semester basis, and vary depending on the number of class sessions in a semester. The semester's fee for the Premium activity will be divided by 5 and will be included in your monthly payment installments during the semester. There is no trial period or refunds for activities.



Late Care

Regular pick up is between 5:30 - 5:45 pm, Monday through Friday. Late Care pick up between 5:45 pm and 6:15 pm, Monday through Thursday (there is no Late Care on Fridays). The Y cannot commit to provide care for a child after 7:15 pm. If a child remains in the care of Be Me after 7:15 pm, the Y reserves the right to notify the appropriate authorities.

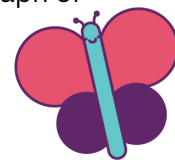
2023-24 Emergency Care

Emergency Care \$35 • **Emergency Care + Bus Home or Late Care \$45**
Emergency Bus \$15 • **Emergency Late Care \$15** • Holiday Add-on \$35
Additional Early Dismissal Pick-up from Partnering Schools \$75



Emergency Care, Emergency Busing, Emergency Late Care.

In order for a child to attend Be Me on a day for which they are not enrolled, the parent or guardian of the child should email a request to BeMe@ywhi.org prior to 11:00 am on the day for which Emergency Care is desired (and preferably the day before). Requests will be fulfilled as busing and classroom capacities allow. The parent or guardian will be notified, via email, about whether or not the request can be fulfilled. Payments will be charged to the Credit Card on file. If a parent or guardian requires busing home on a day for which a child is not enrolled in busing home, the request procedure detailed above should also be followed. Similarly, if a parent or guardian requires Late Care (meaning the parent or guardian needs to pick up the child between 5:45 and 6:15) on a day for which the child is not enrolled in Late Care, the request procedure detailed in the first paragraph of this section should be followed.



Early Dismissals From School

Be Me will provide early pick up from partner schools and extended programming 2 times per year for no additional charge, on the 2 days during which the Department of Education dismisses elementary school students from school early. During the 2023-2024 school year, Early Dismissals are scheduled for Thursday, November 2, 2023 and Thursday, March 7, 2024. There is no need to register in order to participate on an Early Dismissal Day from school. If your child is enrolled we will assume we are picking them up unless you inform the program otherwise. If your child(ren) requires pick up from one of our partnering schools (PS. 187, Muscota, Amistad, PS. 278, Dos Puentes, PS.178 and PS. 152) on an additional early dismissal (beyond the 2 regularly scheduled DOE early dismissal days) there will be a \$50 charge. On Early Dismissal days, Be Me will provide supervision, activities, and snacks for participants prior to commencing with a normal after school schedule at 2:30pm.



Scheduled Days Off / Breaks From School

The Y will provide full-day programs for an additional fee on certain scheduled days off from school. These programs will be filled on a first-come first-served basis. Registration forms will be emailed out to Be Me registrants 2-3 weeks prior to the program. Please see Be Me's 2022-23 Important Dates Calendar for a full list of day off programming.

Members \$90/day

Community \$110/day



Refunds

Be Me is a yearlong program. There is no trial period for activities. For Be Me 2023-24 enrollment and registration changes will be accepted with no additional fees until Friday, 09/01. Starting 09/02, refunds and credits will not be granted (except for extenuating circumstances to be reviewed on a case-by-case basis) and additional charges for administrative fees will be in effect.

Absences due to illness or other personal reasons shall not be made up or merit financial reimbursement or credits towards any other program or family member, and the Y shall have no liability if it is closed because of emergency repairs to the building, labor disputes, inclement weather, or other special circumstances.

Unless your child must be absent in excess of 14 consecutive days, only then will the Y offer a prorated credit for the days missed. Credits are at the discretion of the Y and will require pre-approval along with a doctor's note. There are no credits, refunds or prorated rates offered for program cancellations and missed days unless Be Me is closed for more than 14 consecutive days. At that time, a prorated credit will be established.

Behaviors that Pose a Danger to Children and/or Staff. The Y reserves the right to remove any child, without providing a refund to the child's family, from the after school program, whose behaviors exhibit a physical and/or emotional danger to themselves, other children and/or staff members.





Siblings Discounts

Available for families with two or more participants enrolled. A sibling discount will be issued when guardians contract services for more than one child in a specific year-round program at the Y. A 5% discount will be applied to the participant with the lower fee. In the case of more than one sibling, the 5% discount applies to all additional participants after the first participant. Each sibling must be registered for concurrent programs in the same year.



For Example:

- 2 children enrolled in Be Me 2022-23
- 1 child enrolled in Nursery School 2022-23 and 1 child enrolled in Be Me 2022-23.

Discounts are applied to the following charges:

- Be Me tuition • Be Me transportation • Be Me Late Care • Nursery School Transportation
- Nursery School tuition (including Early, Lunch, Late, and Extended Care)

Discounts are not applied to the following:

- Nursery School Electives • Birthday Parties • Sunday Funday
- Fitness Memberships • Holiday Camp • Day Off Programs • Premium Activities
- Toddler Programs (i.e. Music + Playtime Combo Class)



Sibling discounts do not apply for those who apply for financial assistance.

If financial assistance is not awarded or is awarded at a level where families are not paying less than they would with the sibling discount, the sibling discount will be applied at that point instead of financial assistance.

Unfortunately, there is no automated way that ensures the Y's registration staff are aware of a registrant's eligibility for a sibling discount. As a result, if a registrant believes he/she qualifies for a sibling discount, the registrant should notify the after school program by emailing BeMe@ywhi.org immediately after registering for the after school program, in order to ensure the eligibility is brought to the attention of the registrar. This discount will be deducted from the start-of-program balance.





Financial Assistance

Limited financial assistance is available for qualifying families. To apply, download the application [here](#). Applications for financial assistance will only be considered after the applicant has submitted a completed registration form, a \$250 initial payment, and a complete financial assistance application. The deadline to submit an application is **July 30, 2023**.

Mandatory Paperwork

Before your child can begin the program, the Office of Children and Family Services requires immunizations and a submission of a written medical statement stamped by a health care provider in accordance with the New York State Public Health Law (PHL). Proof of immunization in Section 2164(7)(a) of the PHL prohibits a childcare program, such as Be Me, from allowing a child to attend for more than 14 days upon expiry of the original medical statement without acceptable documentation of the child's updated immunization and medical statement. If your child's medical statement expires within the Be Me school year, you will be notified by the Be Me staff that your child's form should be updated. The federal statutory and regulatory requirements provide that the grace period (14 days) allow for a child to receive services while the family takes necessary action to comply with immunization and medical statements.

