

Program Year

In 2025-2026 the afterschool program is divided into two semesters:

Semester 1: September 8, 2025 to January 23rd, 2026

Semester 2: January 26, 2026 to June 12, 2026

For a complete list of dates Be Me is not running, please see the separate document, "Be Me 2025-2026 Important Dates."

Online Registration

All afterschool registrants are required to enroll through the parent portal, which is available [here](#).

Initial Payment

A \$500 deposit is required to secure a child's spot. The deposit will reduce the total amount owed for the program based on the fees listed below. The deposit is refundable until August 29th, 2025. After that time, deposits will not be refunded.

Membership

While membership is not required for Be Me registrants, our Family Membership offers discounted pricing for Y programs, including Be Me, Y Nursery School, Footpaths Nursery Camp, the Hudson Cliffs Baseball League, Camp Twelve Trails, and adult fitness classes. This membership also entitles one guardian to full access to the Y's Fitness Center. Family Membership must be purchased through the Traction Rec Community **before** registering your child for Be Me, or else the discount will not be applied.

Membership fees are charged monthly.
The annual equivalent for a membership is:

- One child in Y programs: \$456
- Two children in Y programs: \$504
- Add Fitness Membership for one additional guardian: \$48



Yearly Tution

Days Per Week	Tution
5 Days	\$5,475
4 Days	\$5,140
3 Days	\$4,420
2 Days	\$3,700

*Through our longstanding partnership with PS. 187, Muscota, Amistad, PS. 278, Dos Puentes, PS. 178 and PS. 152, we are able to offer transportation to the Y

Membership Discount

Days Per Week	Tution
5 Days	\$5,125
4 Days	\$4,790
3 Days	\$4,095
2 Days	\$3,475

OPTIONAL

Yearly Transportation Home from the Y

End-of-day busing is not available for participants enrolled in Late care. There is no busing on Fridays

Days Per Week	Tution
4 Days	\$885
3 Days	\$790
2 Days	\$715
1 Day	\$649

Yearly Late Care

All participants must be picked up from the Y. There is no Late Care on Fridays

Days Per Week	Tution
4 Days	\$885
3 Days	\$790
2 Days	\$715
1 Day	\$649



Installment Payments

The sum of your yearly tuition, plus yearly add-ons such as transportation and late care, will be divided by 10. This is the amount you will pay in 10 monthly installments, on 9 the day of every month, from September through June. If you sign up for Premium Activities, those additional fees will be divided by 5 and added to your monthly installments for the semester.

Payment Dates

**9/09/25, 10/09/25, 11/09/25, 12/09/25, 1/09/26,
2/09/26, 3/09/26, 4/09/26, 5/09/26, 6/09/26**

By enrolling in Be Me, registrants give the Y permission to charge the credit card or debit card provided at the time of registration for the appropriate fees, on the above dates.

It is the responsibility of the registrant to familiarize themselves with the fees associated with Be Me's services before enrollment. All fees are available at the Be Me homepage, as well as at the beginning of this document. You can check your account in the Traction Rec Community at any time to see upcoming payments due for Be Me and other Y programs and memberships.

Schedule Changes

Changes to your afterschool schedule can be accommodated if notified appropriately, and with space permitting. Notifications of this nature should be sent by email to BeMe@ywhi.org at least 72 hours before the next billing cycle. All changes will require a \$150 administrative fee. There is no fee for changes between semesters.

Premium Activities

The majority of afterschool activities are available to participants at no additional fee. However, certain specialized afterschool activities require an additional fee in order to participate. These Premium Activity fees are published on a per-semester basis and vary depending on the number of class sessions in a semester. The semester's fee for the Premium activity will be divided by 5 and will be included in your monthly payment installments during the semester. There is no trial period or refunds for activities.



Late Care

Regular pick up is between 5:30 - 5:45 pm, Monday through Friday. Late Care pick up between 5:45 pm and 6:15 pm, Monday through Thursday (there is no Late Care on Fridays). The Y cannot commit to provide care for a child after 6:15 pm. If a child remains in the care of Be Me after 6:15 pm, the Y reserves the right to notify the appropriate authorities.

Emergency Care

Emergency Care \$55

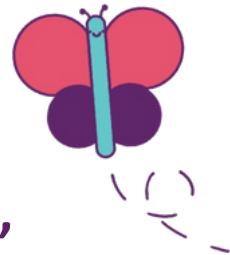
Emergency Care + Bus Home or Late Care \$70

Emergency Bus \$30

Emergency Late Care \$30

Holiday Add-on \$55

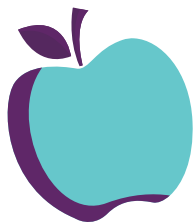
**Additional Early Dismissal Pick-up
from Partnering Schools \$80**



Emergency Care, Emergency Busing, Emergency Late Care

In order for a child to attend Be Me on a day for which they are not enrolled, the parent or guardian of the child should email a request to BeMe@ywhi.org before 11:00 am on the day for which Emergency Care is desired (and preferably the day before). Requests will be fulfilled as busing and classroom capacities allow. The parent or guardian will be notified, via email, about whether or not the request can be fulfilled. Payments will be charged to the Credit Card on file.

If a parent or guardian requires busing home on a day for which a child is not enrolled in busing home, the request procedure detailed above should also be followed. Similarly, if a parent or guardian requires Late Care (meaning the parent or guardian needs to pick up the child between 5:45 and 6:15) on a day for which the child is not enrolled in Late Care, the request procedure detailed in the first paragraph of this section should be followed.



DOE Early Dismissal Days

Be Me will provide early pick up from partner schools and extended programming 2 times per year for no additional charge, on the 2 days during which the Department of Education dismisses elementary school students from school early. During the 2025-2026 school year, Early Dismissals are scheduled for Thursday, November 6, 2025, and Thursday, March 5, 2026. There is no need to register to participate in an Early Dismissal Day from school.

If your child is enrolled, we will assume we are picking them up unless you inform the program otherwise. If your child(ren) requires pick up from one of our partnering schools (PS. 187, Muscota, Amistad, PS. 278, Dos Puentes, PS.178, and PS. 152) on an additional early dismissal (beyond the 2 regularly scheduled DOE early dismissal days) there will be a \$75 charge. On Early Dismissal days, Be Me will provide supervision, activities, and snacks for participants before commencing with a normal afterschool schedule at 2:30 pm.

Refunds

Be Me is a yearlong program. There is no trial period for activities. For Be Me 2025-26 enrollment and registration changes will be accepted with no additional fees until Friday, 08/29. Starting 08/30, refunds and credits will not be granted (except for extenuating circumstances to be reviewed on a case-by-case basis), and additional charges for administrative fees will be in effect.

Absences due to illness or other personal reasons shall not be made up or merit financial reimbursement or credits towards any other program or family member, and the Y shall have no liability if it is closed because of emergency repairs to the building, labor disputes, inclement weather, or other special circumstances.

Unless your child must be absent in excess of 14 consecutive days, only then will the Y offer a prorated credit for the days missed. Credits are at the discretion of the Y and will require pre-approval along with a doctor's note. There are no credits, refunds or prorated rates offered for program cancellations and missed days unless Be Me is closed for more than 14 consecutive days. At that time, a prorated credit will be established.





Behaviors that Pose a Danger to Children and/or Staff

The Y reserves the right to remove any child, without providing a refund to the child's family, from the afterschool program, whose behaviors exhibit a physical and/or emotional danger to themselves, other children, and/or staff members.

Siblings

Available for families with two or more participants enrolled. A sibling discount will be issued when guardians contract services for more than one child in a specific school year-round program at the Y. A 5% discount will be applied to the participant with the lower fee. In the case of more than one sibling, the 5% discount applies to all additional participants after the first participant. Each sibling must be registered for concurrent programs in the same year.


For Example:

- 2 children enrolled in Be Me 2025-26
- 1 child enrolled in Nursery School 2025-26 and 1 child enrolled in Be Me 2025-26.

Discounts are applied to the following charges:

- Be Me Tuition
- Be Me Transportation
- Be Me Late Care
- Nursery School Transportation
- Nursery School Tuition (Including Extended Care)

Discounts are not applied to the following:

- Birthday Parties
 - Fitness Memberships
 - Kidventures at the Y
 - Premium Activities
- 



Sibling Discounts Do Not Apply to Those Who Apply for Financial Assistance

Limited financial assistance is available for qualifying families. To apply, download the application [here](#). Applications for financial assistance will only be considered after the applicant has submitted a completed registration form, a \$500 initial payment, and a complete financial assistance application.

The deadline to submit an application is August 1st, 2025. Refunds of the initial payment will be given if a family applying for financial assistance withdraws from the program within 5 business days of being notified of their financial assistance award determination.

Mandatory Paperwork

Before your child can begin the program, the Office of Children and Family Services requires immunizations and a submission of a written medical statement stamped by a health care provider in accordance with the New York State Public Health Law (PHL). Proof of immunization in Section 2164(7)(a) of the PHL prohibits a childcare program, such as Be Me, from allowing a child to attend for more than 14 days upon expiry of the original medical statement without acceptable documentation of the child's updated immunization and medical statement.

If your child's medical statement expires within the Be Me school year, you will be notified by the Be Me staff that your child's form should be updated. The federal statutory and regulatory requirements provide that the grace period (14 days) allows for a child to receive services while the family takes necessary action to comply with immunization and medical requirements.

This means that your child needs a medical form, signed and stamped by their healthcare provider, for a medical performed in the past year in order to participate in Be Me. Without a current medical, we cannot pick up your child from school or have them at the program. You have a 14-day grace period from one year after the date the medical was completed to submit a new medical. After this 14-day grace period, we must suspend services until we receive an updated medical.

